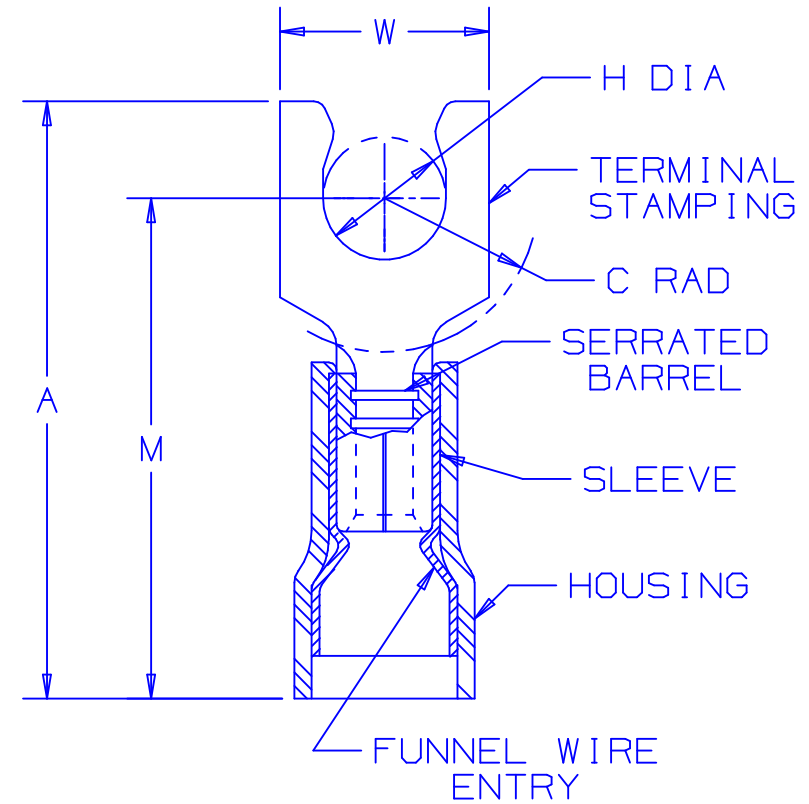


PART NUMBER		DIMENSIONS in.				
PREFIX	STUD SIZE	A $\begin{smallmatrix} \pm .03 \\ (.8) \end{smallmatrix}$	W $\begin{smallmatrix} \pm .01 \\ (.3) \end{smallmatrix}$	C $\begin{smallmatrix} \pm .015 \\ (.4) \end{smallmatrix}$	M $\begin{smallmatrix} \pm .03 \\ (.8) \end{smallmatrix}$	H $\begin{smallmatrix} \pm .010 \\ (.25) \end{smallmatrix}$
PNF18-5SLF	#5	.75 (19.0)	.26 (6.6)	.19 (4.7)	.63 (16.1)	.124 (3.15)
PNF18-6SLF	#6	.75 (19.0)	.27 (6.9)	.19 (4.7)	.63 (16.1)	.136 (3.45)
PNF18-8SLF	#8	.80 (20.4)	.29 (7.4)	.23 (5.8)	.68 (17.2)	.162 (4.11)
PNF18-10SLF	#10	.81 (20.7)	.33 (8.3)	.23 (5.8)	.68 (17.2)	.188 (4.78)

NOTES:

- USED FOR:
 - A. 600V MAX VOLTAGE RATING (1000V. MAX. IN SIGNS, FIXTURES & LUMINARIES)
 - B. 221°F (105°C) MAX TEMP RATING
 - C. 22-18 AWG STRANDED COPPER WIRE
- INSTALLATION TOOLS:
 - A. UL LISTED AND CSA CERTIFIED FOR: CT-510
 - B. PANDUIT APPROVED: CT-400, CT-500, CT-1550 & CT-1551.
- WIRE STRIP LENGTH: $7/32^{+1/32}_{-0}$ (5.6 $^{+.8}_{-0}$)
- MAX WIRE INSULATION DIA: .145 (3.68)
MIN WIRE INSULATION DIA: .080 (2.03)
- MATERIAL:
 - A. STAMPING: .03 (.8) TIN PLATED COPPER
 - B. HOUSING : RED NYLON
 - C. SLEEVE : TIN PLATED BRASS
- PACKAGING:
 - A. STD PKG.: -C = 100
 - B. BULK ONLY: -M = 1000
- DIMENSIONS IN BRACKETS ARE IN MILLIMETERS OR mm²



LISTED
587H
E52164



CERTIFIED
LR31212

06	5/04	JHNU		REVISED NOTE 6, REMOVED PK COLUMN			
05	1/01	KMDSKB		CAD FILE SPEC. WAS N41251AA_PCD_04	08938	CCH	JAC
04	12/96	JAMB		UPDATED & ADDED TO NOTES, "MIN. WIRE INSUL. DIA."			
03	9/95	MS	RLS	UPDATED NOTES AND DIMENSIONS	05383		
02	6/92	BK	RS	UPDATED	01064	JMO	LA
REV	DATE	BY	CHK	DESCRIPTION	ECN	PM	APP

A41251_06

PANDUIT

CORP.

TINLEY PARK, ILLINOIS

#22-18 BARREL FUNNELED ENTRY NYLON INSULATED SHORT LOCKING FORK, .145 (3.68) MAX WIRE INSUL. DIA.

DRAWN BY	CHK'D	SCALE	DRAWING NO.
DAW	RLS	NONE	A41251